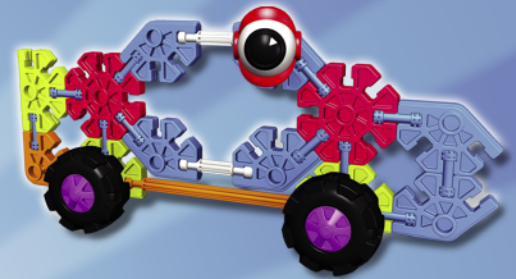
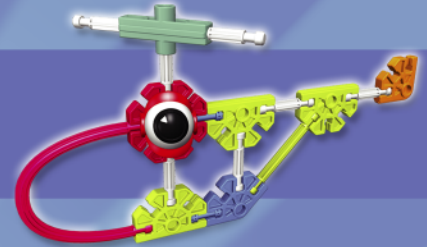


Kid K'NEX®



85325/3155

⚠ WARNING:

CHOKING HAZARD - Small parts.
Not for children under 3 years.

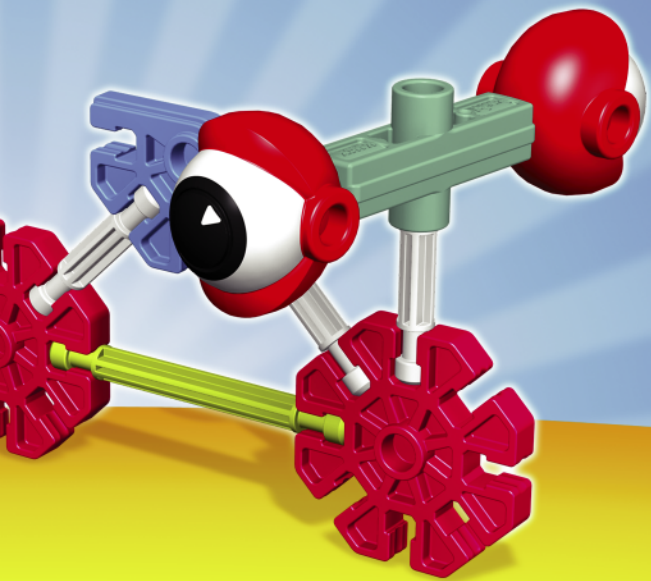
⚠ AVERTISSEMENT:

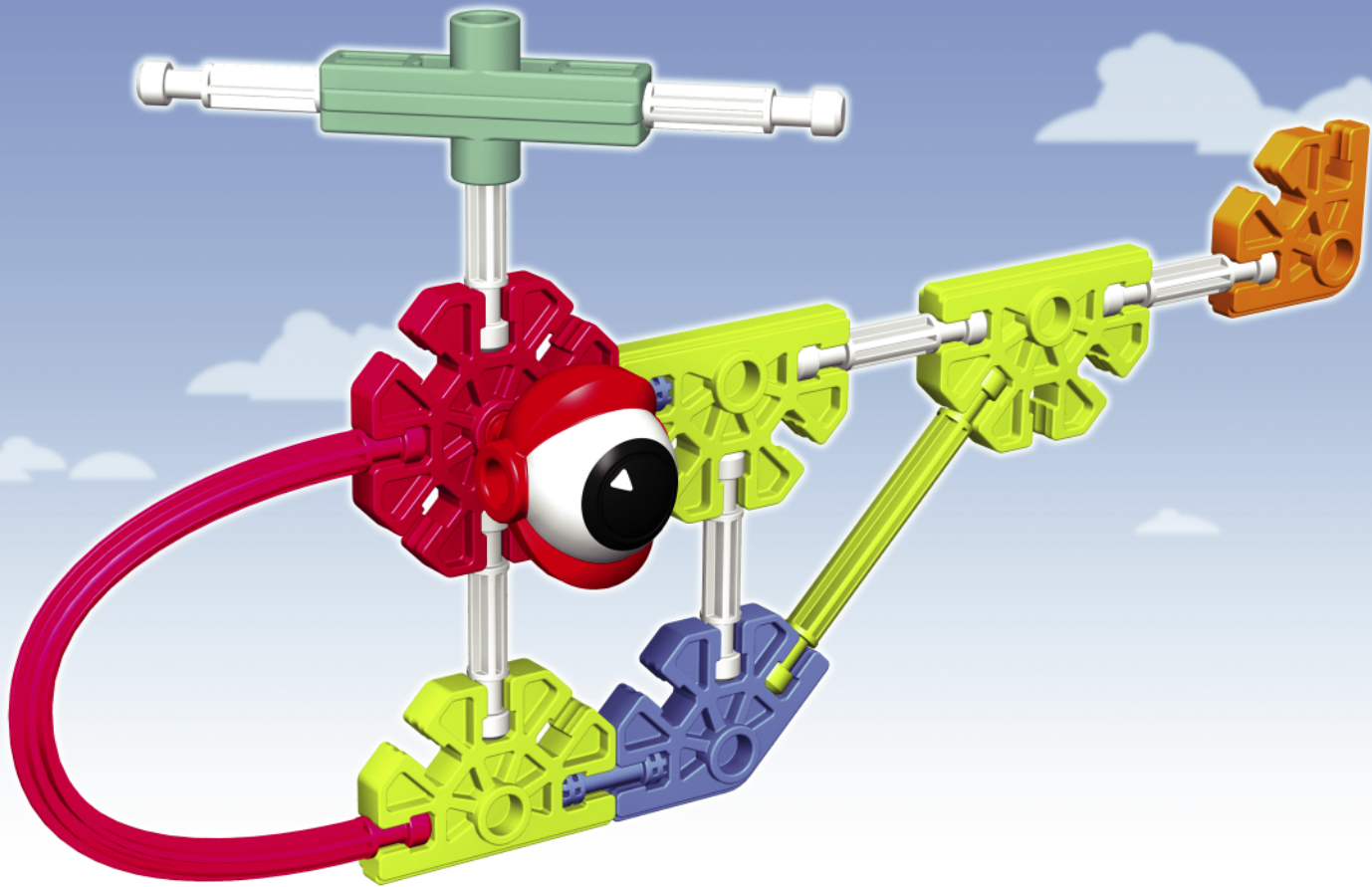
DANGER D'ÉTOUFFEMENT - Pièces de petite taille.
Ne pas donner aux enfants de moins de 3 ans.

ZOOMIN' BUDDIES™ 3+

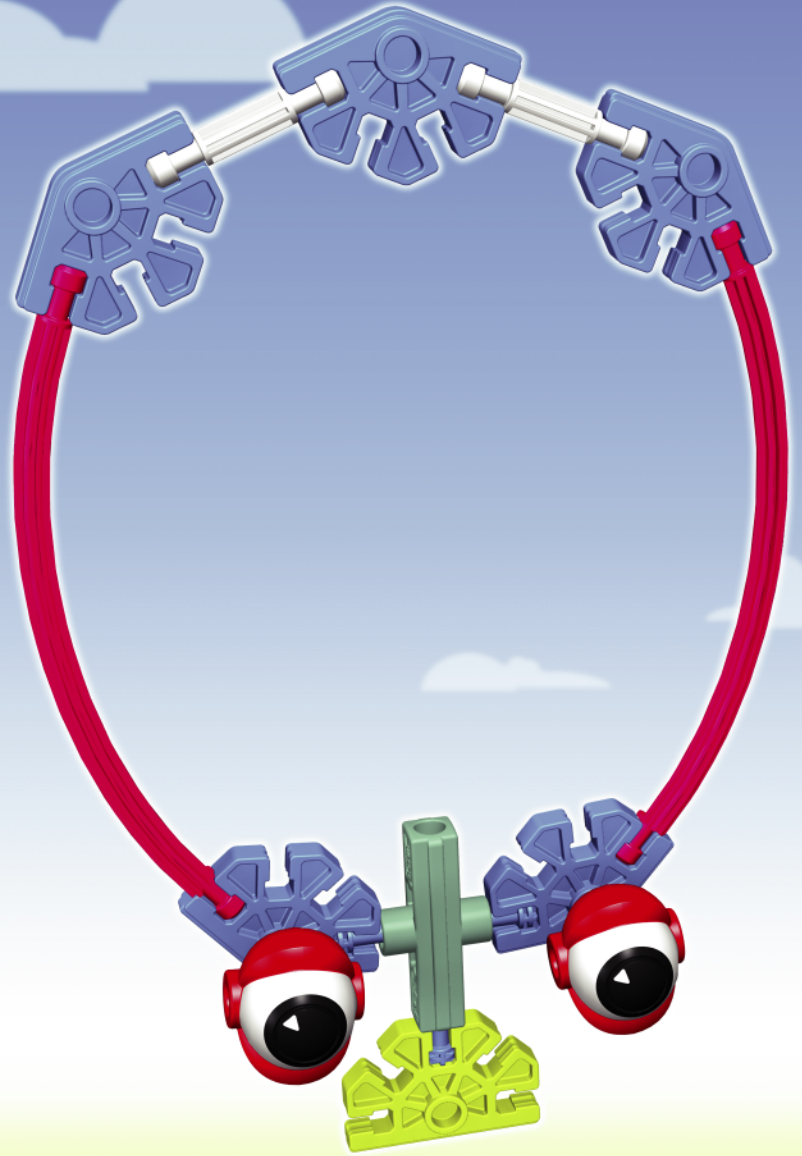
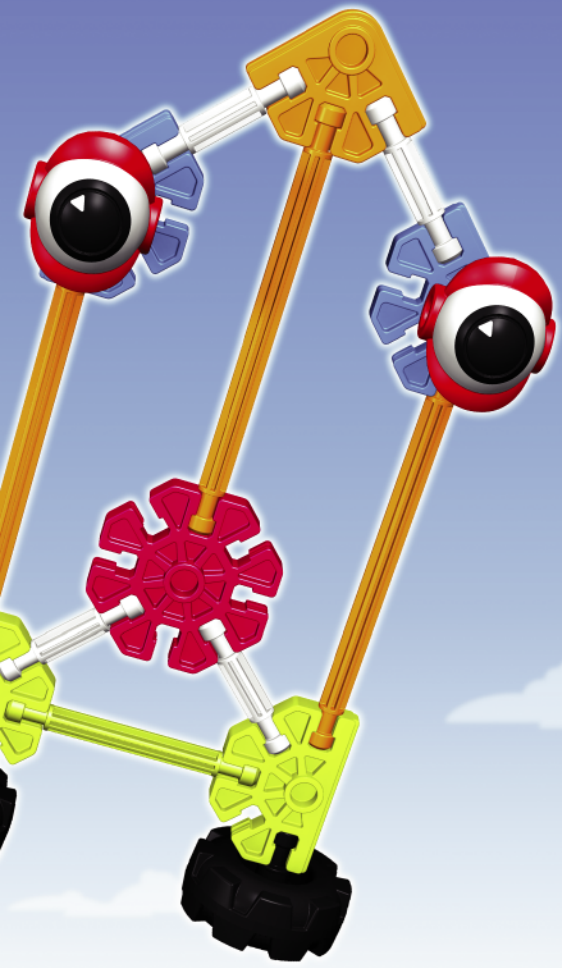
81 pcs/pzs/pzas

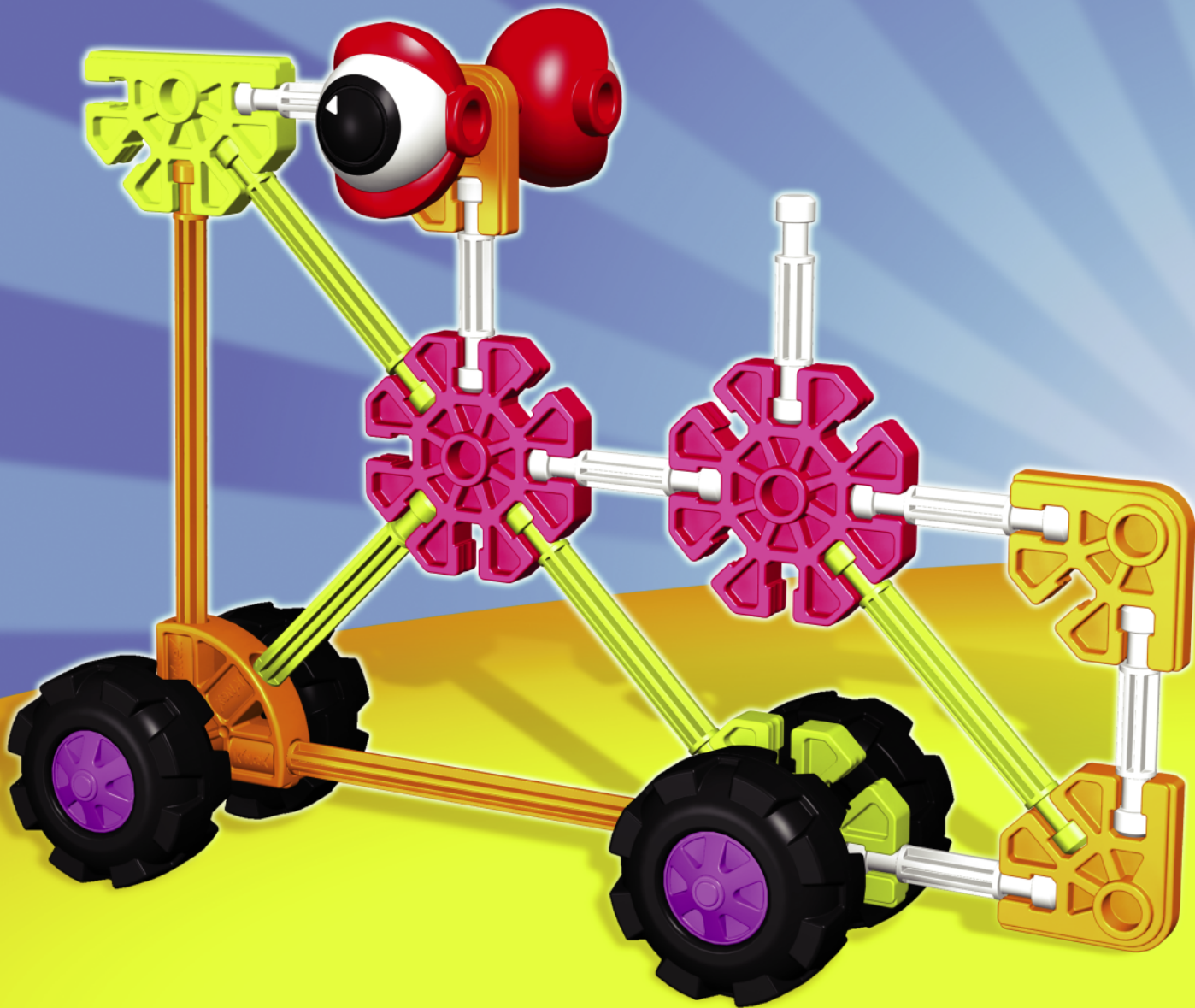




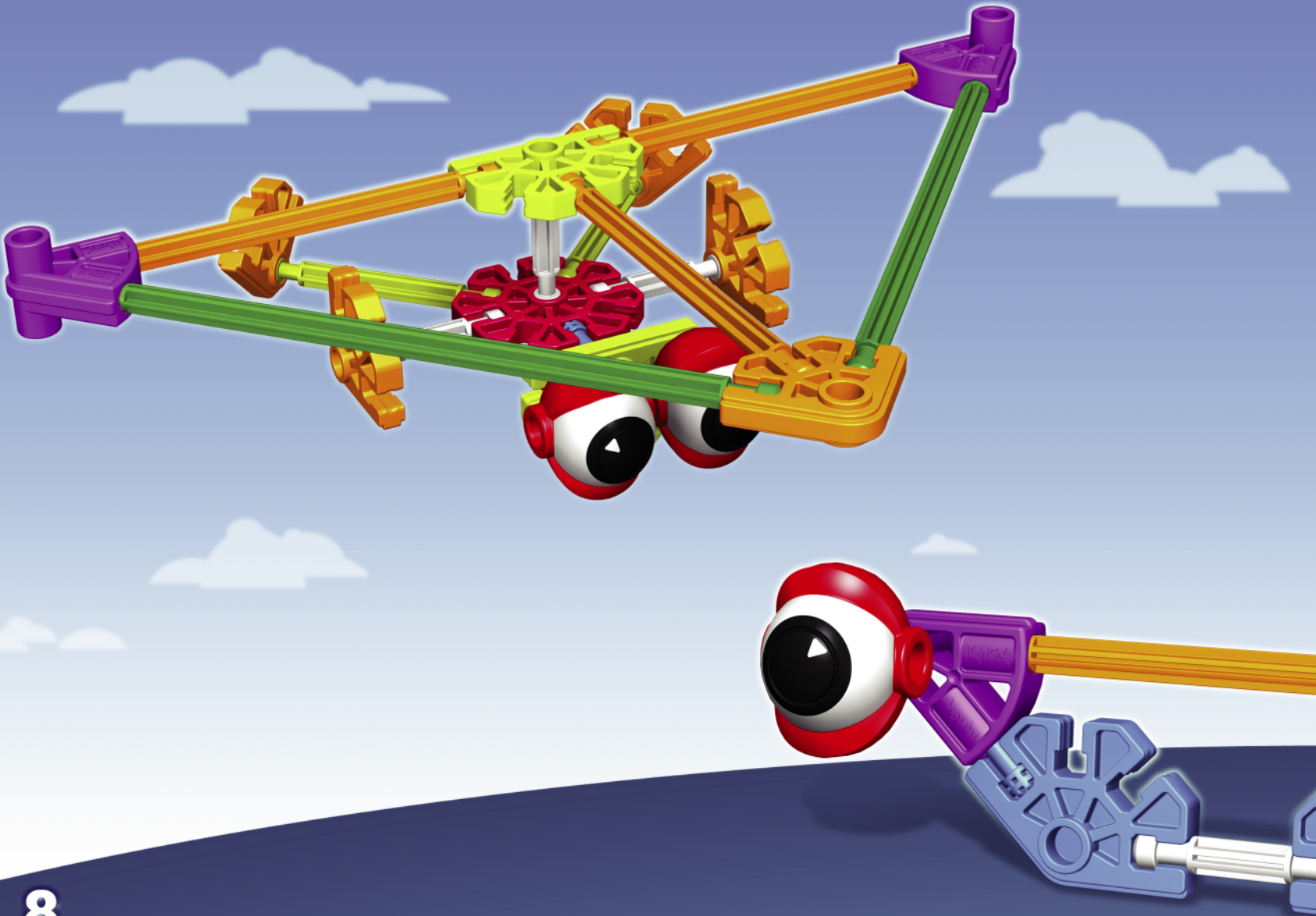


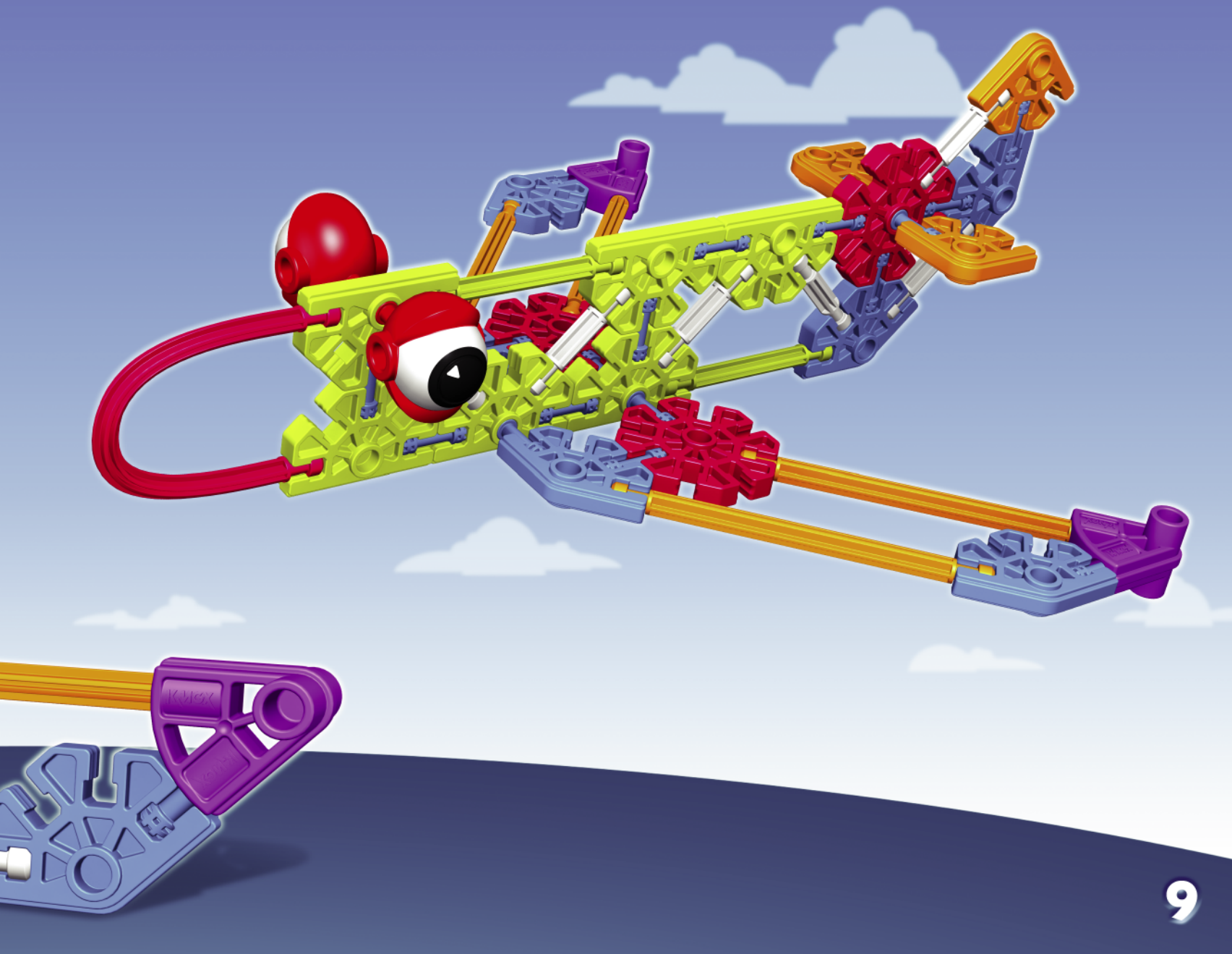
4

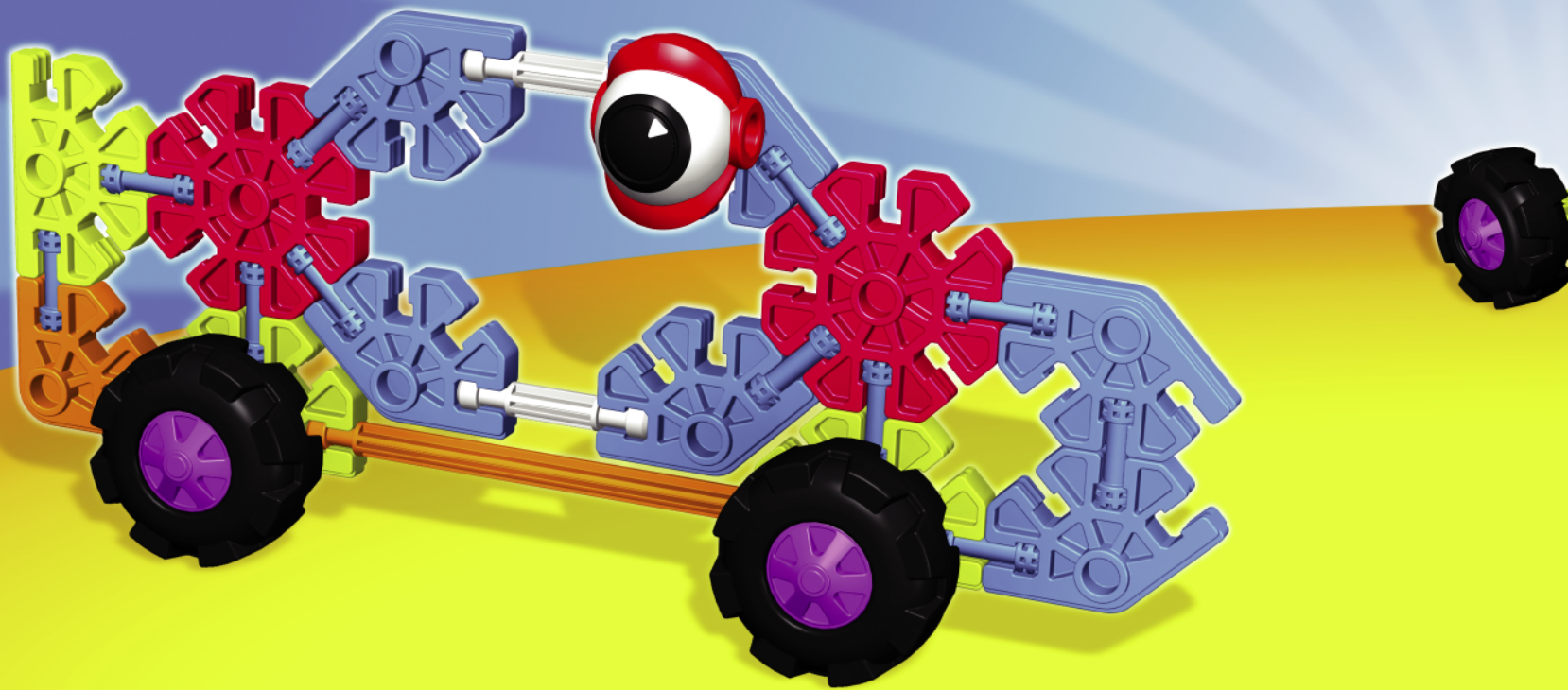


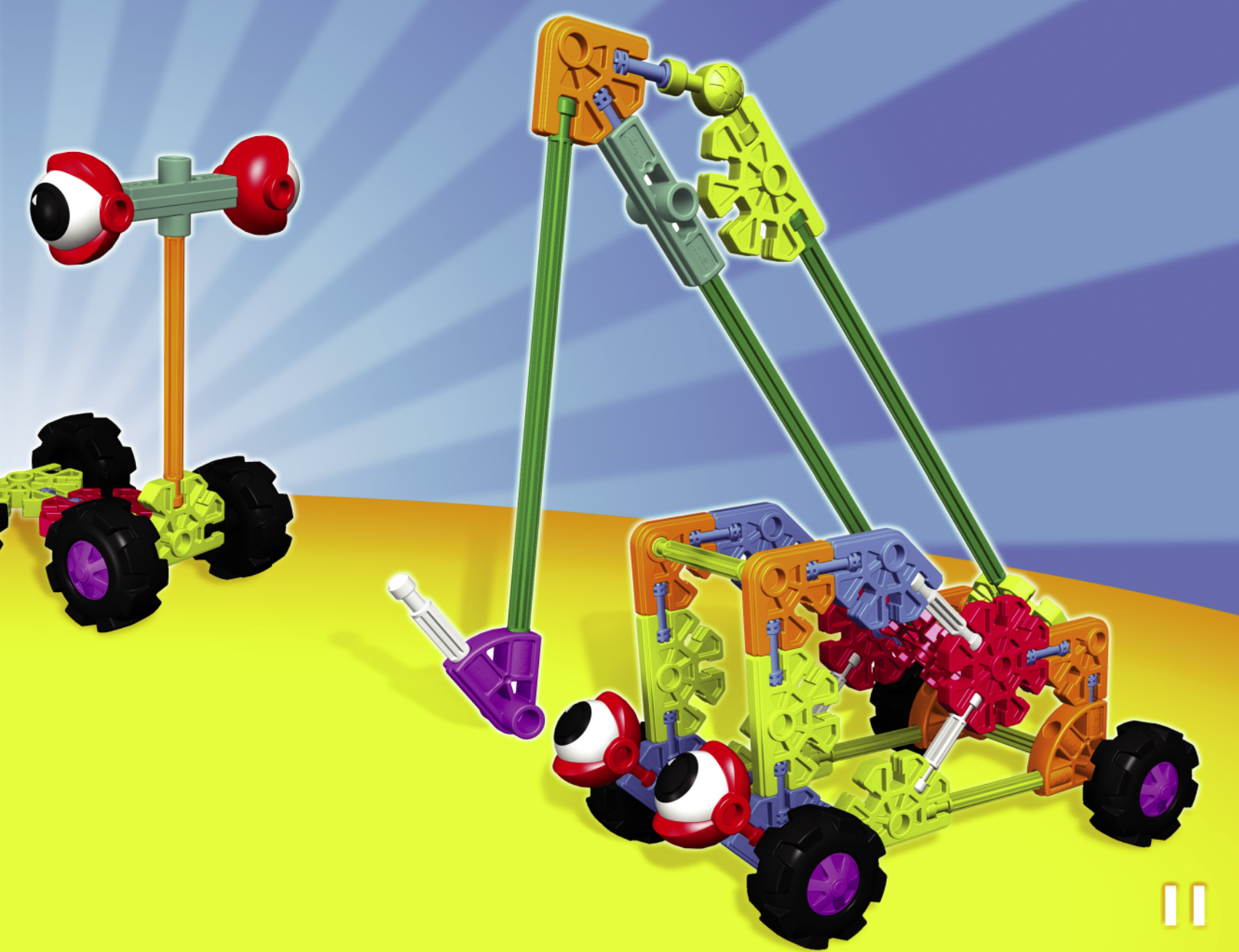


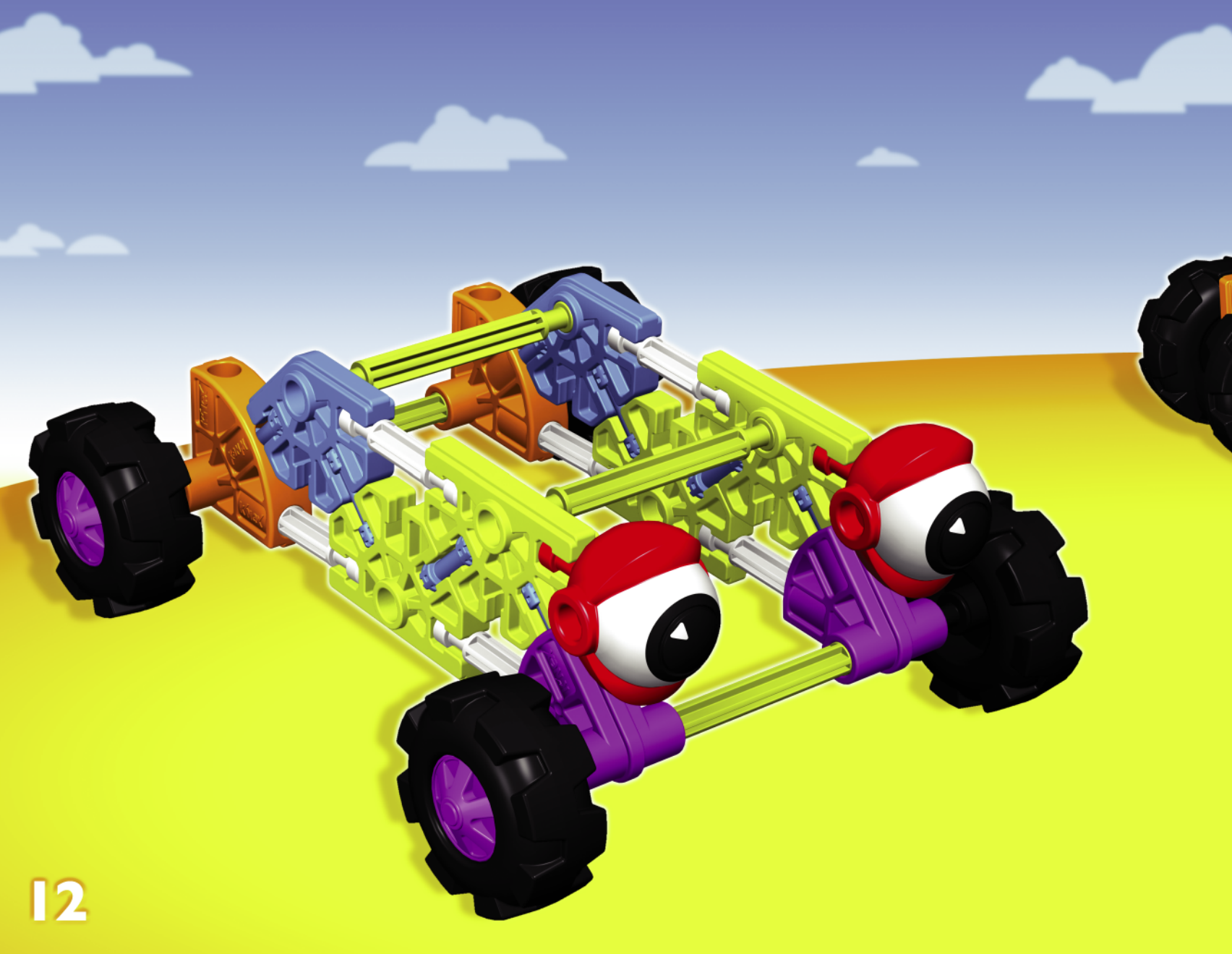




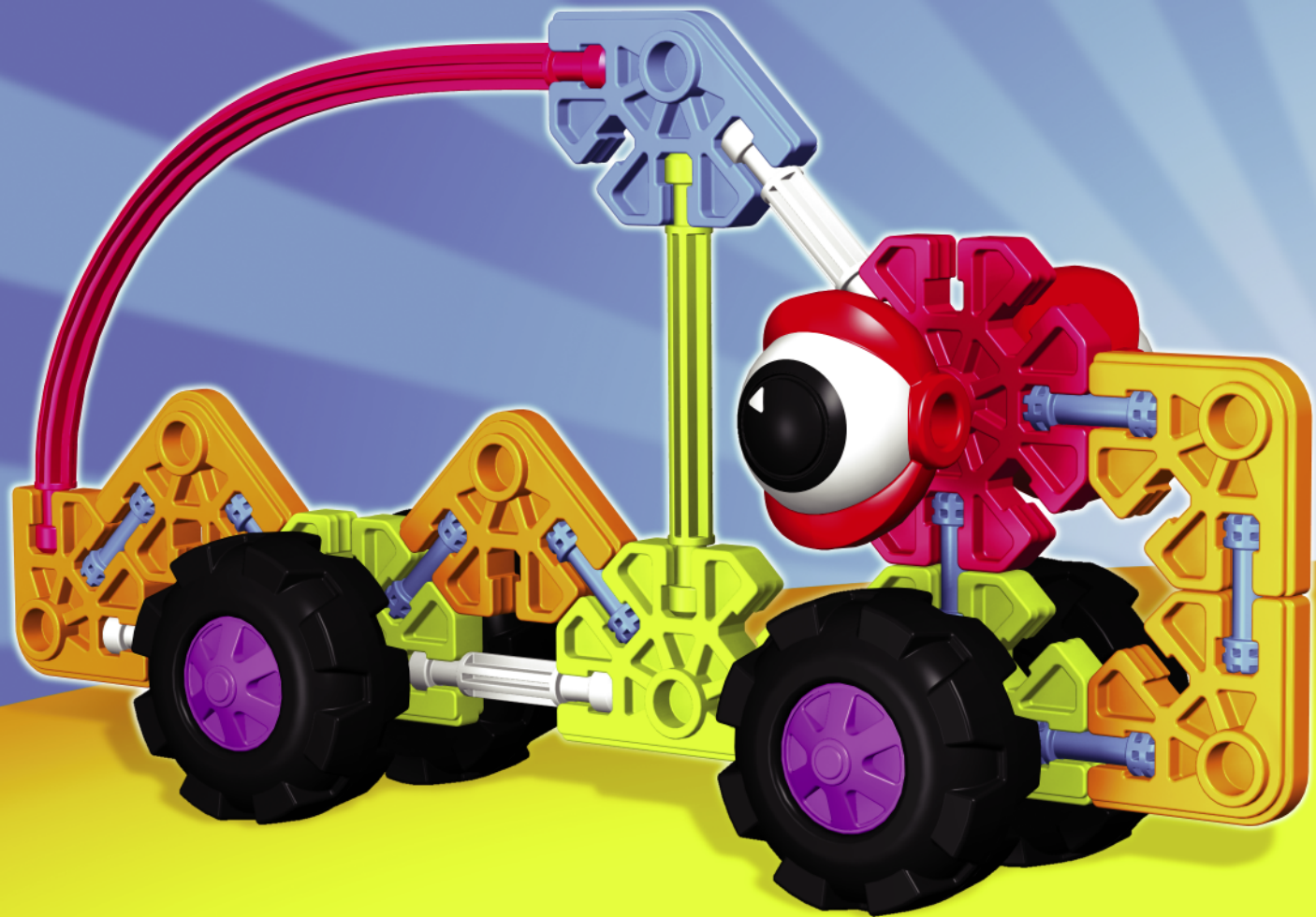


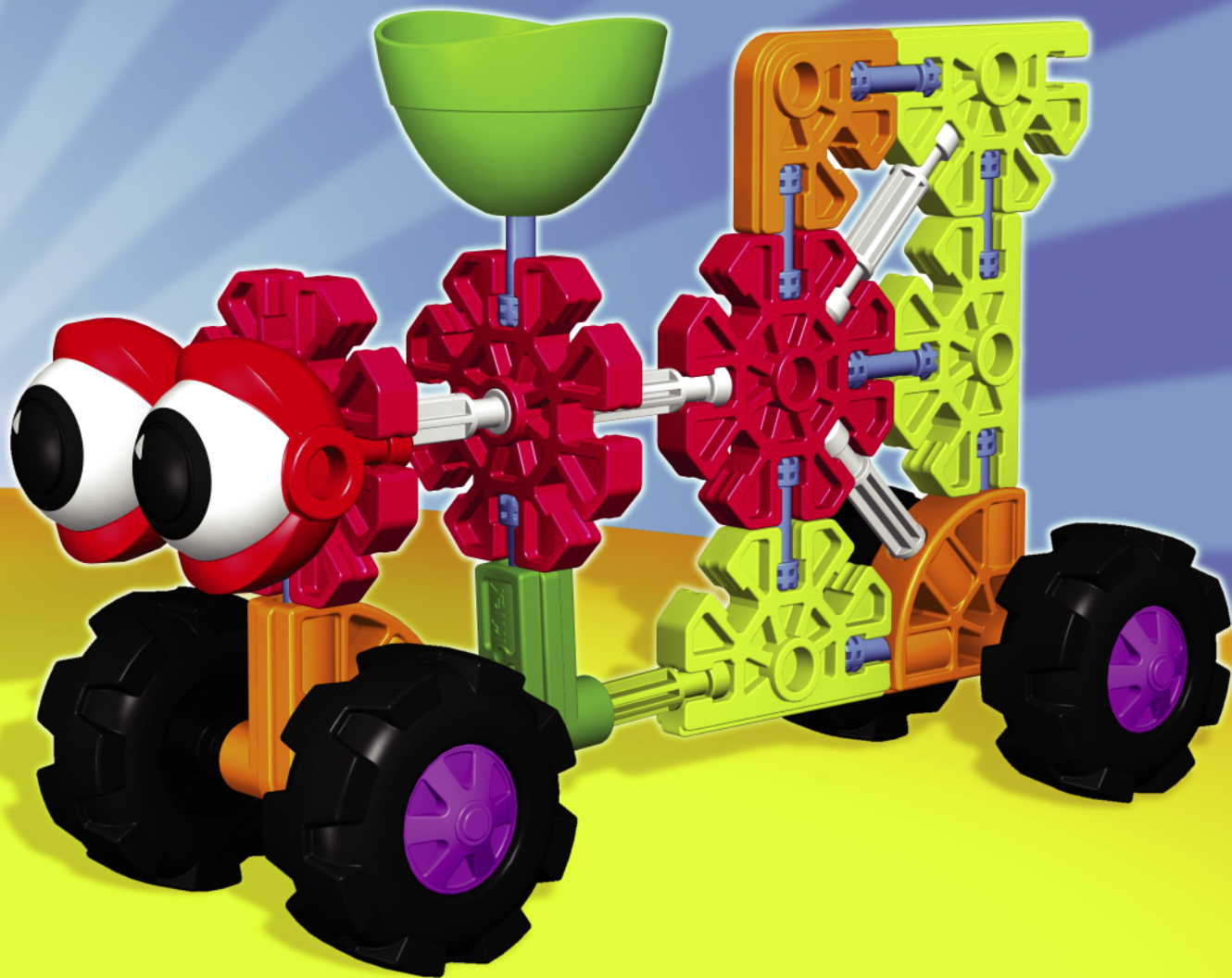




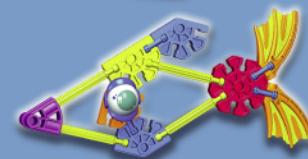
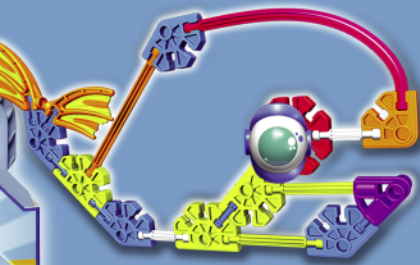








kid K'NEX.COM



K'NEX Customer Service. Call 1-800-KID-KNEX (USA/CAN only); Write to email@knex.com
 For Customer Service outside USA/CAN contact your local distributor at: <http://www.knex.com/distributors>
 (FR) Le Service clients hors d'USA/CAN, s'il vous plaît contacter le distributeur local.
 L'information de distributeur peut être trouvée à <http://www.knex.com/distributors>
 (AZ) (NZ) (UK) (DE) (NL) (BE) (CH) (CL) (PE) <http://www.knex.com/distributors>
 (UK) TOMY Careline , PO Box 20 , Totton, Hants, SO40 3YF; Tel 023 8066 2600
 (FR) ALLO TOMY SAV, Parc d'affaires international, 74166 ARCHAMPS ; Tél 0 820 013 013
 (UK) (FR) (DE) (NL) <http://www.tomy.eu>

K'NEX and KID K'NEX are registered trademarks of K'NEX Limited Partnership Group.
 K'NEX et KID K'NEX sont des marques déposées de K'NEX Limited Partnership Group.
 K'NEX y KID K'NEX son las marcas registradas de K'NEX Limited Partnership Group.

Manufactured under U.S. Patents/Fabriqué sous brevets américains/
 Fabricado bajo patentes de EE.UU. 6,676,474; 6,843,700.
 Registered 244,590. Enregistré 244,590. Registrado 244,590.
 Other U.S. and foreign patents pending.
 Autres brevets américains et étrangers en instance.
 Otras patentes de EE.UU. y países extranjeros pendientes.

Community Design No.000751581-0001-0005. Conforms to ASTM F963-07.
 Conforme aux ASTM F963-07. Cumple con F963-07 de la ASTM.



©2009 K'NEX Limited Partnership Group
 P.O. Box 700
 Hatfield, PA 19440-0700

40740 4.11-V2-09/08