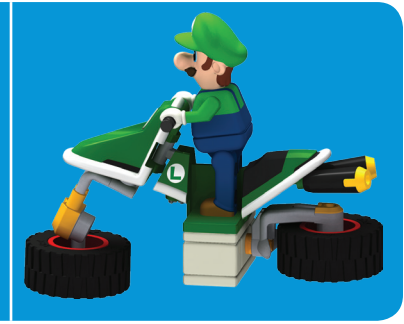
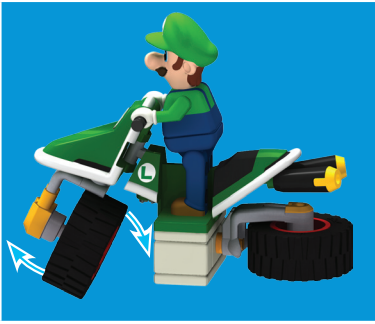


Standard Mode
Modèle Standard#



Hover Mode
Mode Flotter:

TM & © 2015 Nintendo.



- Identifies Genuine K'NEX Bricks.
- Identifie que ce sont d'authentiques briques K'NEX.
- Identifica los ladrillos genuinos de K'NEX.
- Identifiziert echte K'NEX-Bausteine.
- Edentifica i veri blocchi K'NEX.
- Identifica que são cubos genuinos da K'NEX.
- Identificeert K'NEX bakstenen voor.

#Modo estándar
Standardmodus
Modo normale
Modo padrão
Standaard toestand

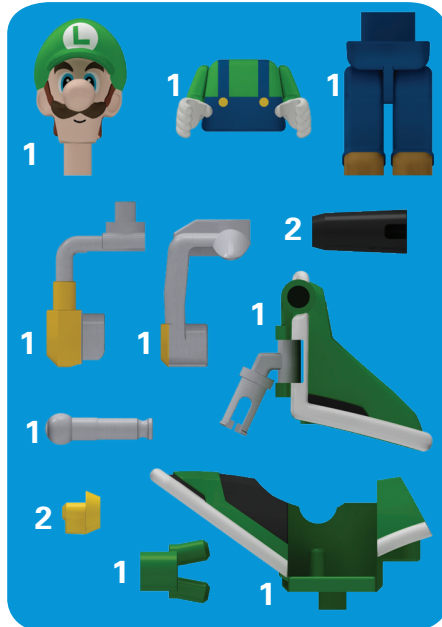
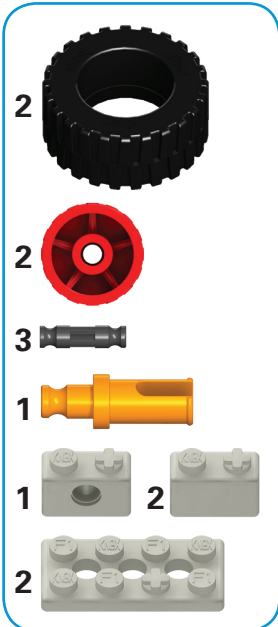
#Modo flotar
Hover Modus
Modo per sorvolare
Modo cursor
Zweefmodus



facebook.com/knex



KNEX.COM



Sold separately.
Vendus séparément.
Se venden por separado.
Separat erhältlich.

Venduti separatamente.
Vendidos separadamente.
Afzonderlijk verkocht.

WARNING: CHOKING HAZARD – Small parts. Not for children under 3 years.
ATTENTION : RISQUE D'ÉTOUFFEMENT – Pièces de petite taille. Ne convient pas aux enfants de moins de 3 ans.
ADVERTENCIA: PELIGRO DE ASFIXIA – Piezas pequeñas. No para niños menores de 3 años.
ACHTUNG: ERSTICKUNGSGEFAHR – Kleinteile. Nicht geeignet für Kinder unter 3 Jahren.
AVVISO: PERICOLO DI SOFFOCARE – Pezzi piccoli. Non adatto per bambini sotto 3 anni.
AVISO: PERIGO DE SUFOCAÇÃO – Peças pequenas. Não se destina a crianças com menos de 3 anos de idade.
WAARSCHUWING: INSLIKKINGSGEVAAR – Kleine onderdelen. Niet geschikt voor kinderen jonger dan 3 jaar.

©2015 K'NEX Limited Partnership Group, P.O. Box 700, Hatfield, PA 19440-0700; 1-800-KID-KNEX (USA/Canada/États-Unis/EE.UU.); email@knex.com; knex.com. K'NEX UK Ltd., P.O. Box 3083, Reading RG1 9YQ, England. K'NEX and Building Worlds Kids Love are registered trademarks of K'NEX Limited Partnership Group. Product and colors may vary. For customers outside the USA/Canada please contact your local distributor at www.knex.com/distributors. (FR) K'NEX et Building Worlds Kids Love sont des marques déposées de K'NEX Limited Partnership Group. Produits et couleurs peuvent varier. Pour les clients en dehors du Canada et des États-Unis, veuillez contacter votre distributeur local que vous pouvez trouver sur www.knex.com/distributors. (ES) K'NEX y Building Worlds Kids Love son marcas registradas de K'NEX Limited Partnership Group. El producto y los colores pueden variar. El cliente que no vive en EE.UU./Canadá se pone en contacto con el distribuidor local. Encuentre la información para el distribuidor local en www.knex.com/distributors.

415495.11-V1-1/15

K'NEX
Building Worlds Kids Love®

LUIGI™
BIKE BUILDING SET
MOTO JEU DE CONSTRUCTION

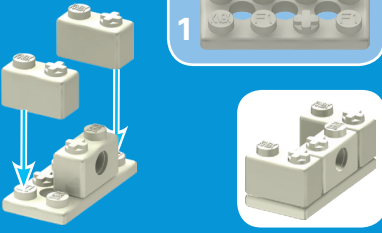
6+ 38995

MARIOKART 8

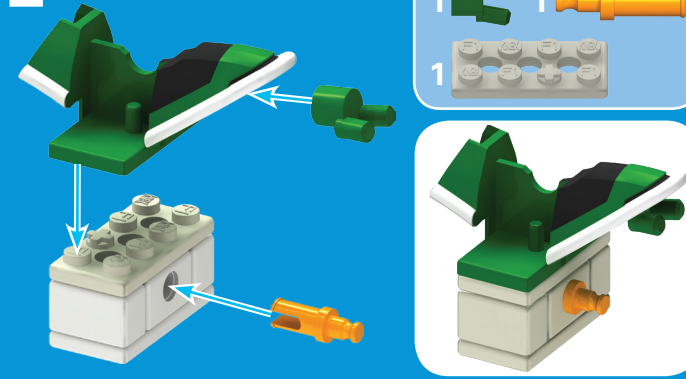
Standard mode
Modèle Standard#

Hover mode
Mode Flotter™

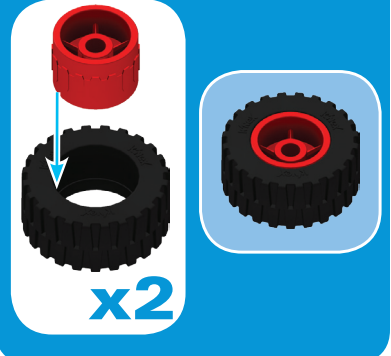
1



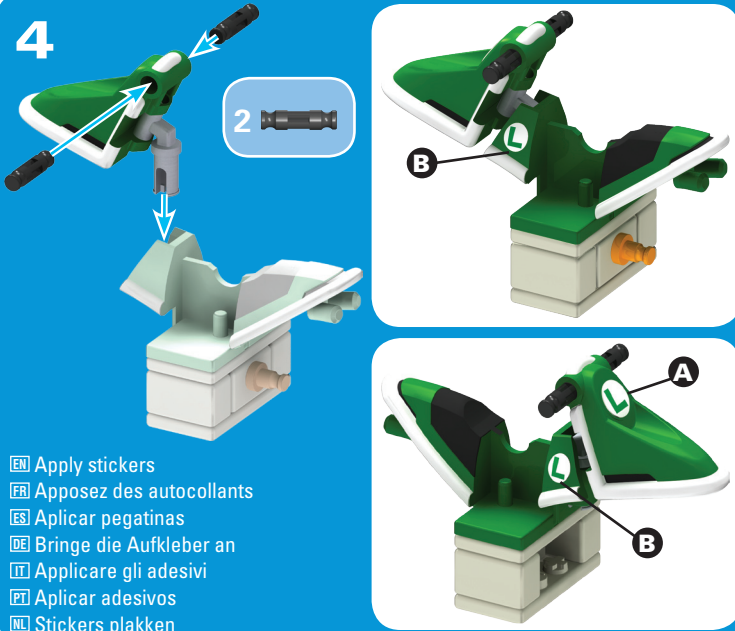
2



3

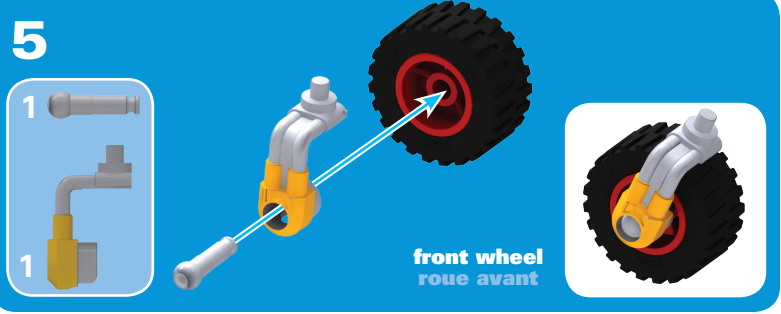


4

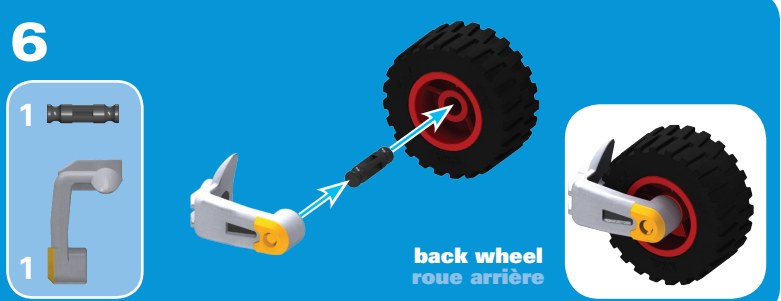


- Apply stickers
- Appliquez des autocollants
- Aplicar pegatinas
- Bringe die Aufkleber an
- Applicare gli adesivi
- Aplicar adhesivos
- Stickers plakken

5



6



7



MARIOKART

LUIGI™
BIKE BUILDING SET
MOTO JEU DE CONSTRUCTION

8



9

